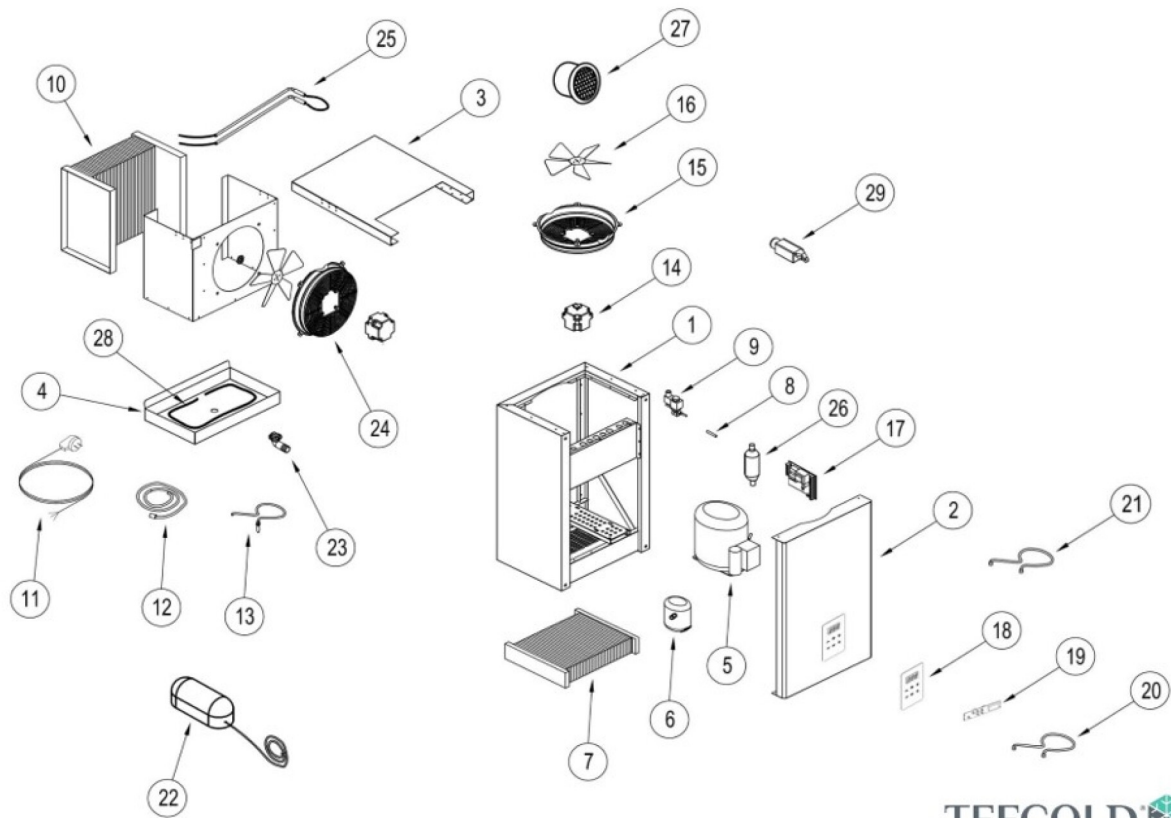


66838 / CRNF1527 /UK

| Position | ItemNo | Description |
|----------|--------|---------------------------------|
| 02 | 44416 | Front Panel 45 mm |
| 03 | 44417 | Evaporator Panel 45 mm |
| 04 | 44418 | Water Box 45 mm |
| 05 | 44443 | Compressor NJX 2215 U R290 50Hz |
| 06 | 44420 | Reciever |
| 07 | 44421 | Condenser |
| 08 | 44422 | Expansion Valve Needle |
| 09 | 44423 | Expansion Valve |
| 10 | 44424 | Evaporator |
| 12 | 44425 | Probe 3000 mm |
| 13 | 44426 | Probe 1500 mm |
| 14 | 44427 | Condenser Fan Ø250 mm |
| 15 | 44428 | Finger guard |
| 16 | 44429 | Evaporator Fan Ø300 mm |
| 17 | 44430 | Motherboard |
| 18 | 44431 | Waterproof Digital Thermostat |
| 19 | 44432 | Waterproof Digital Front Panel |
| 20 | 44441 | Door frame heater |
| 21 | 44434 | Display Connection Cable |
| 22 | 44435 | LED Lamp |
| 23 | 44436 | Drain pipe |
| 24 | 44437 | Finger guard |
| 25 | 44438 | Defrost heater 400 W |
| 26 | 44439 | Filter drier 3/8 |
| 27 | 44440 | Air Valve |
| 28 | 44433 | Condensate Water Heater |
| 29 | 44442 | Door Switch |
| P1 | 44458 | Door |
| P2 | 44441 | Door frame heater |
| P3 | 44451 | Door Hinge |
| P4 | 44452 | Door Lock |
| P5 | 44453 | Door Gasket |
| P6 | 44454 | Assembly Tool |
| P7 | 44455 | Cleaning PVC Profile (Meter) |
| P8 | 44456 | Cleaning PVC Profile Corner |
| P9 | 44457 | Door Switch |

2025-02-19

66838 / CRNF1527 /UK



TEFCOLD® 